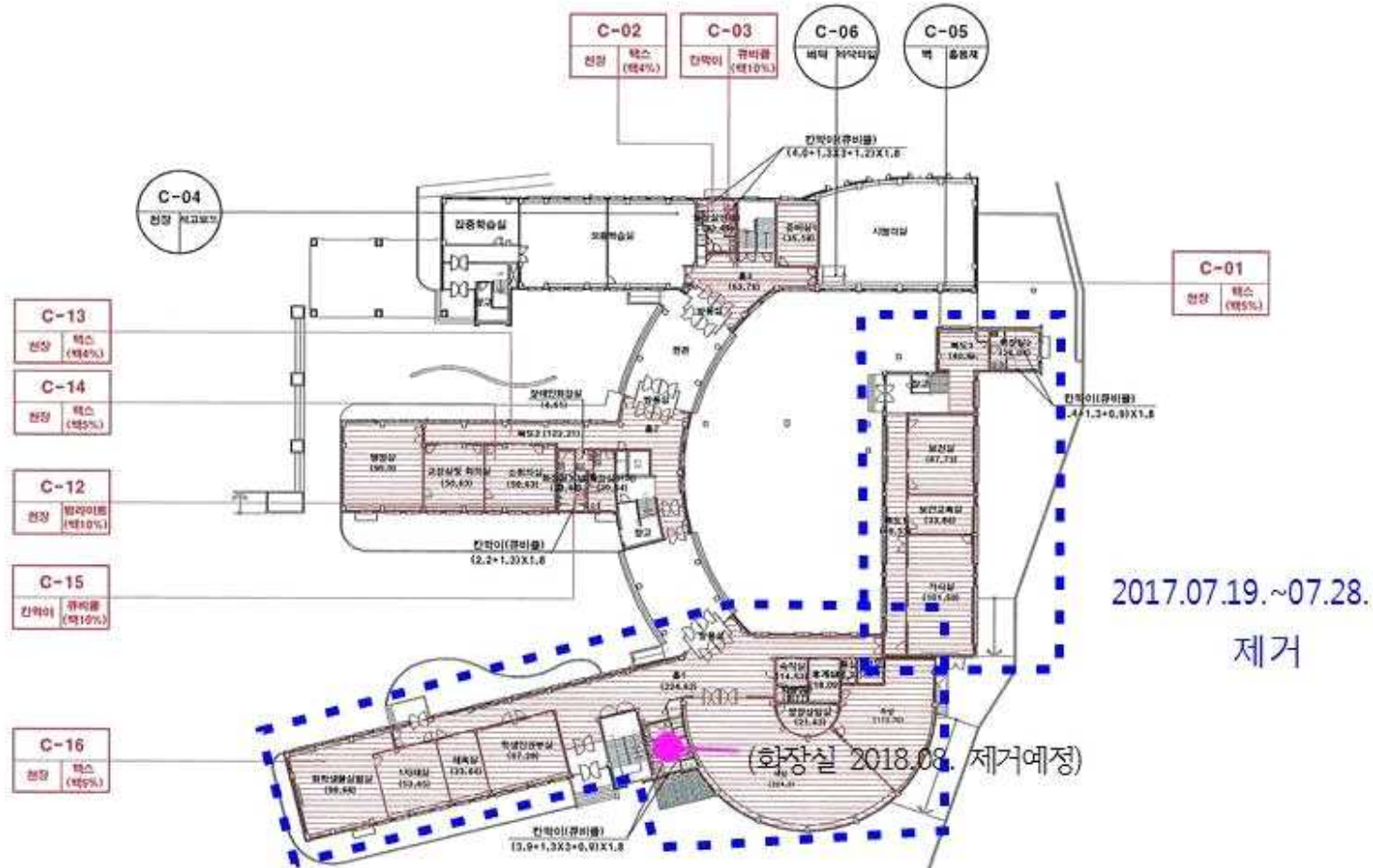
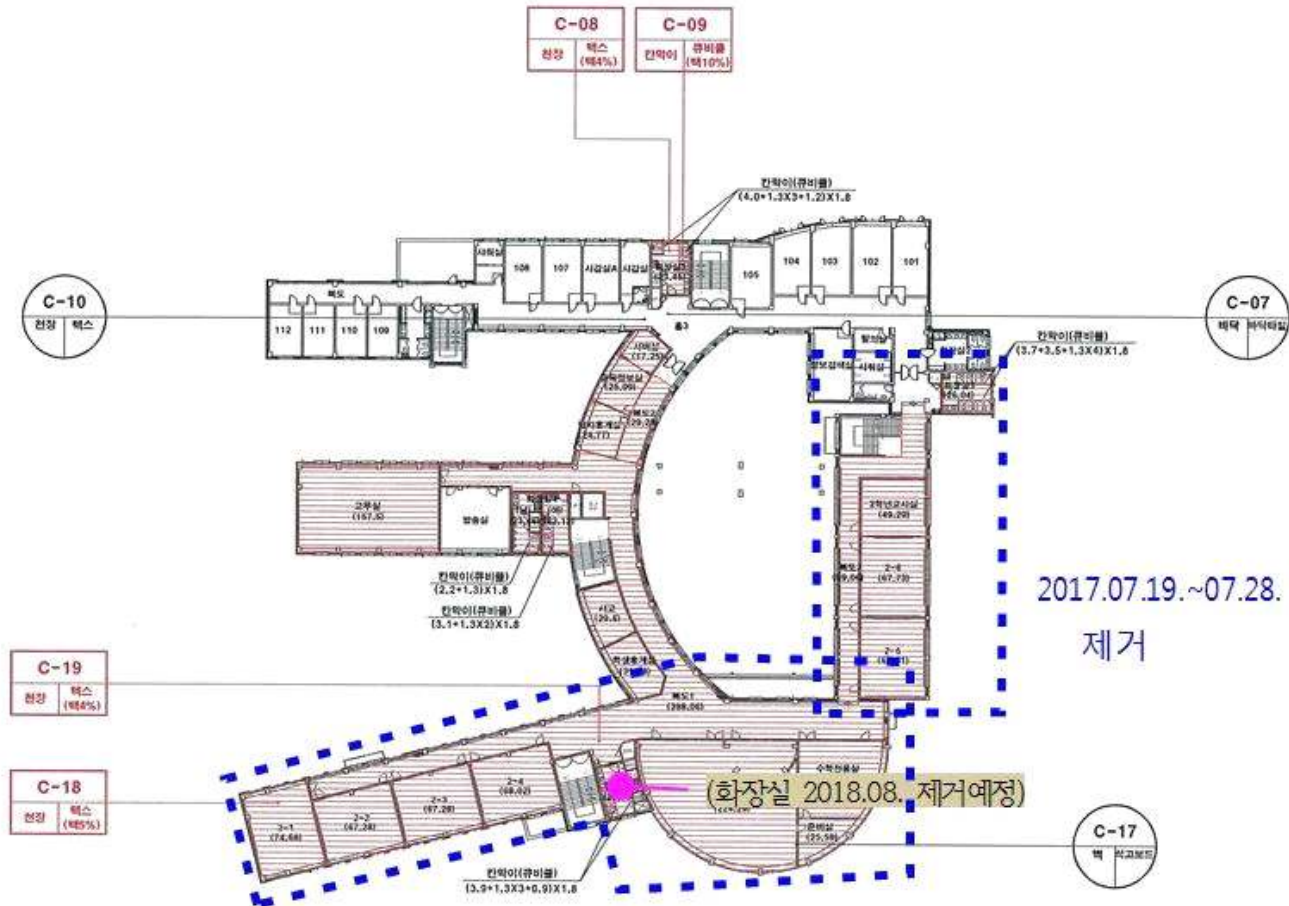


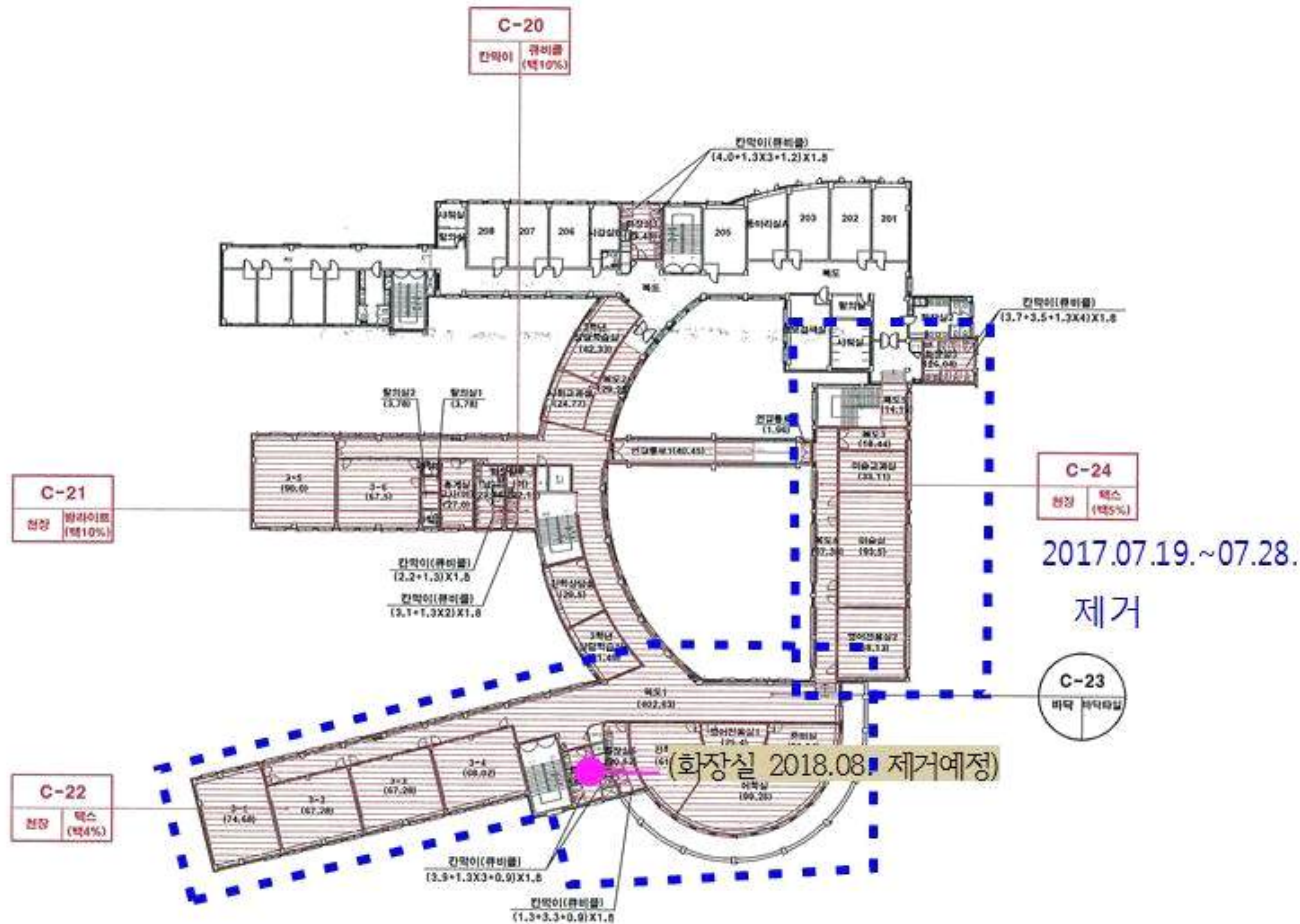
한별고등학교(본관) 1층



한별고등학교(본관) 2층



한별고등학교(본관) 3층



Architectural floor plan of the 1st floor of the National Museum of Korea, showing various rooms and their dimensions. The plan includes a central circular area and several rectangular wings. Rooms are labeled with numbers and names in Korean. Dimensions are provided for several rooms, including C-26, C-25, C-27, and C-28. A yellow box highlights the location of the '화장실' (Toilet) with the date '2018.03. 제거예정' (Removal scheduled for March 2018). A blue dashed line indicates a boundary or path. A pink dot marks a specific location near the center of the plan.

C-26
현장 (화장실) (약 10%)

C-25
현장 (택스) (약 4%)

C-27
현장 (화장실) (약 10%)

C-28
현장 (택스)

2017.07.19.~07.28. 제거

화장실 2018.03. 제거예정