

6 진주조개 잠이

1 조금빠르게

진주조개잡이 <실로폰 1>

난이도 *

Handwritten musical score for a song titled "진주조개잡이 <실로폰 1>" (Pearl Shell Collecting <Silophone 1>). The score is written on five staves, each containing musical notation and Korean lyrics. The lyrics are: "술 - 라 시", "파 술 라", "도 라 시 도 라 파 레", "술 라 술 (2레) (2레) (2레) (2레) (2레)", and "미 파 술 라". The score includes measure numbers 1 through 30. The notation includes treble clefs, a key signature of one sharp (F#), and various musical symbols such as notes, rests, and accidentals. The lyrics are written in Korean, with some words in parentheses indicating repeated notes or specific articulation. The score is handwritten and appears to be a personal or working draft.

진주조개잡이 < 멜로디언 1 >

♩.

A

B

D. S.

진주조개잡이 < 멜로디언 2 >

[A]

♩.

Musical staff 1 (Measures 1-6):

- Measure 1: 2 (C4)
- Measure 2: 3 (D4)
- Measure 3: 4 (E4)
- Measure 4: 5 (F4)
- Measure 5: 6 (G4)
- Measure 6: 7 (A4)

Lyrics: 라 시 (솔) 시 레 (솔) 시

7

Musical staff 2 (Measures 7-12):

- Measure 7: 8 (B4)
- Measure 8: 9 (C5)
- Measure 9: 10 (D5)
- Measure 10: 11 (E5)
- Measure 11: 12 (F5)
- Measure 12: 13 (G5)

Lyrics: (레) (시) 솔 #파 (미) (라) (파) 시 레

13

Musical staff 3 (Measures 13-18):

- Measure 13: 14 (A5)
- Measure 14: 15 (B5)
- Measure 15: 16 (C6)
- Measure 16: 17 (D6)
- Measure 17: 18 (E6)
- Measure 18: 19 (F6)

Lyrics: (도) (시) 라 시 (도) (미) #솔 도 #솔 라 시 도 라 #파 레

[B]

Musical staff 4 (Measures 19-24):

- Measure 19: 20 (G6)
- Measure 20: 21 (A6)
- Measure 21: 22 (B6)
- Measure 22: 23 (C7)
- Measure 23: 24 (D7)
- Measure 24: 25 (E7)

Lyrics: 솔 (도) 레 시 레 (솔) 솔 라 솔 (레) (미) #파 파 파 파 (레) (미) 레 레 #도 (레) (시) 솔 라 솔

25

Musical staff 5 (Measures 25-30):

- Measure 25: 26 (F7)
- Measure 26: 27 (G7)
- Measure 27: 28 (A7)
- Measure 28: 29 (B7)
- Measure 29: 30 (C8)
- Measure 30: 31 (D8)

Lyrics: (도) (미) (도) (미) 미 #파 레 솔 #파 (도) (미) 레 시 레 솔 (도) (미) (솔) (시) (도) (시) 레 솔

P.S

진주조개잡이 (실로폰 2. 비브라폰)

실로폰

A



시 레



(솔)
(시)

=

(라) (시) (레)
(#파) (솔) (시)

=

(솔) (#파)
(레) (레)



(미)
(도)

—

#파 솔 (라)
레 미 (#파)

(시) (레)
(솔) (시)

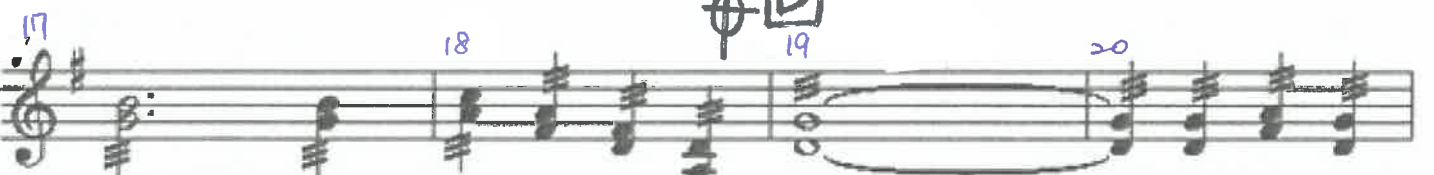


(솔)
(시)

—

(라) (시) (도) (도)
(#파) (솔) (미) (미)

(도) (솔) (라)
(#솔) (미) (#파)



(시)
(솔)

(시)
(솔)

(도) (라) (#파) (레) (솔)
(라) (#파) (레) (라)

솔 라 솔



(#파) (레)
(레)

파 (#파) (레)
(레)

파 (#파) (레)
(레)

파 (#파) (레)
(레)

파 (#파) (레)
(레)

파 (#파) (레)
(레)

파 (#파) (레)
(레)

(미) (레) (레) (#도)
(도) (시) (라)

(레) (솔) (라) (#파)
(레)

(레) (솔) (라) (#파)
(레)

(레) (솔) (라) (#파)
(레)

(레) (솔) (라) (#파)
(레)

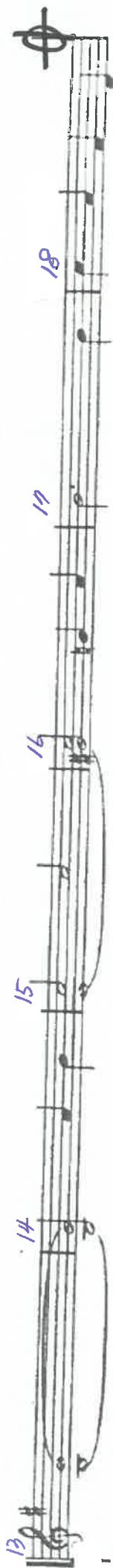
(레) (솔) (라) (#파)
(레)

(레) (솔) (라) (#파)
(레)

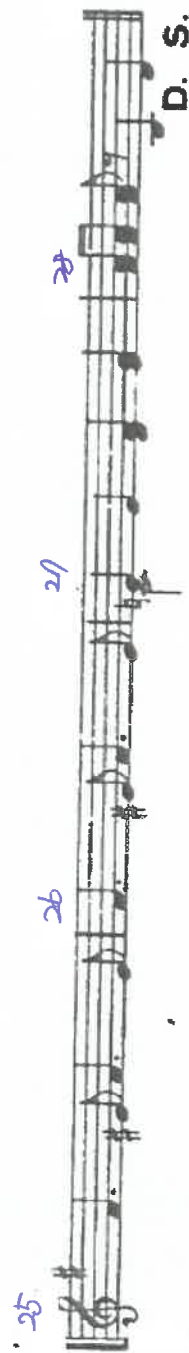
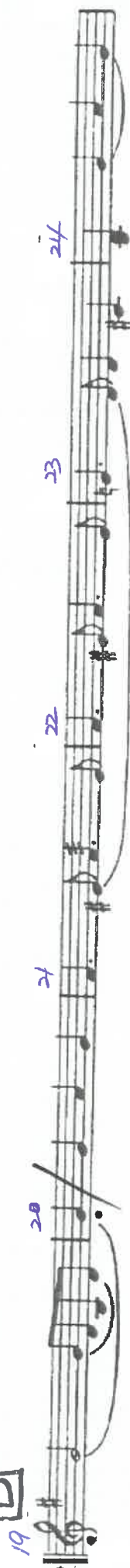
Handwritten musical score for "진주조개잡이" (Pearl Shell Catching). The score is written on two staves. The first staff contains measures 25 to 28, and the second staff contains measures 29 and 30. The music is in G major (one sharp) and 4/4 time. The lyrics are written in Korean under the notes. Measure 25 has a blue '25' above it. Measure 26 has a blue '26' above it. Measure 27 has a blue '27' above it. Measure 28 has a blue '28' above it. Measure 29 has a blue '29' above it. Measure 30 has a blue '30' above it. The lyrics are: (미) #레 (미) #레 (미) #레 (미) #레 미 리 #파 솔 라 리 리 시 리 D.S. (후) (시) \" \" \" \"

진주조개잡이 < 마릴바 >

A'



B



진주조개잡이 < 키보드 >

§.

A

B

DS.

A

진주조개잡이 <롤리팝 드럼, 트라이앵글>

롤리팝드럼
트라이앵글

Handwritten musical notation for measures 1 through 6. Measure 1 starts with a treble clef, a key signature of one sharp (F#), and a common time signature (C). The notation includes eighth and sixteenth notes, rests, and a triplet of eighth notes in measure 3. Measure 6 ends with a double bar line.

Handwritten musical notation for measures 7 through 12. Measure 7 starts with a treble clef, a key signature of one sharp (F#), and a common time signature (C). The notation includes eighth and sixteenth notes, rests, and a triplet of eighth notes in measure 9. Measure 12 ends with a double bar line.

Handwritten musical notation for measures 13 through 18. Measure 13 starts with a treble clef, a key signature of one sharp (F#), and a common time signature (C). The notation includes eighth and sixteenth notes, rests, and a triplet of eighth notes in measure 15. Measure 18 ends with a double bar line.


B

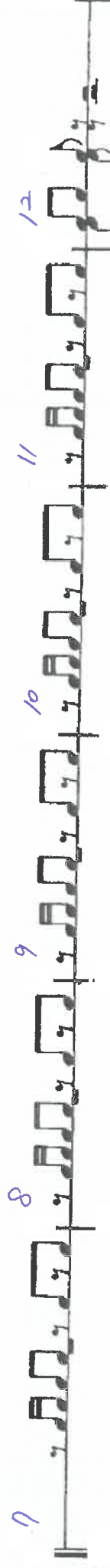
Handwritten musical notation for measures 19 through 24. Measure 19 starts with a treble clef, a key signature of one sharp (F#), and a common time signature (C). The notation includes eighth and sixteenth notes, rests, and a triplet of eighth notes in measure 21. Measure 24 ends with a double bar line.


Handwritten musical notation for measures 25 through 30. Measure 25 starts with a treble clef, a key signature of one sharp (F#), and a common time signature (C). The notation includes eighth and sixteenth notes, rests, and a triplet of eighth notes in measure 27. Measure 30 ends with a double bar line.

D.S.

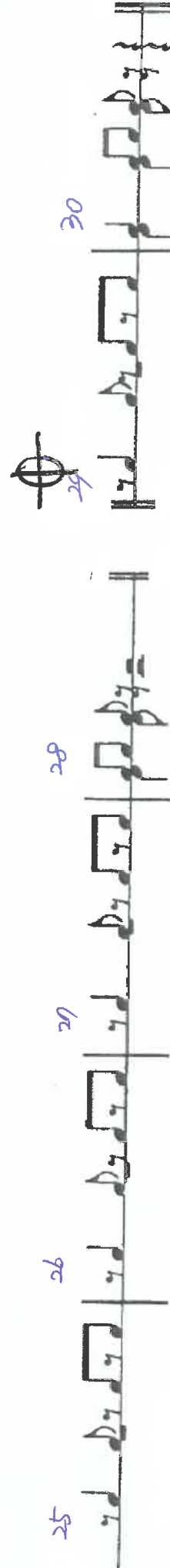
진주조개잡이 <탐버린, 심벌즈>

A  1 2 3 4 5 6

 7 8 9 10 11 12

 13 14 15 16 17 18

B  19 20 21 22 23 24

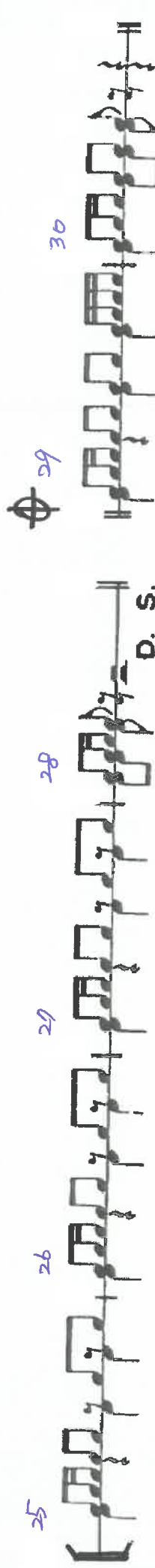
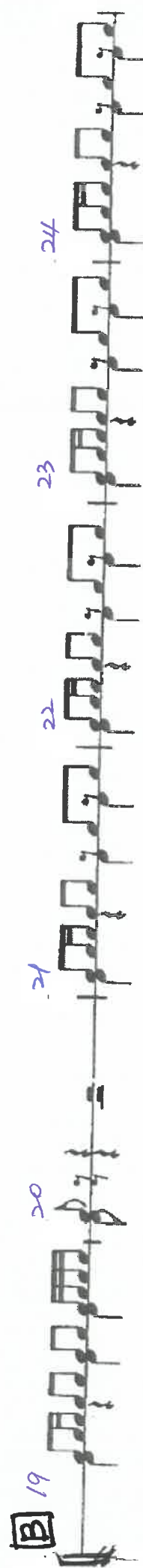
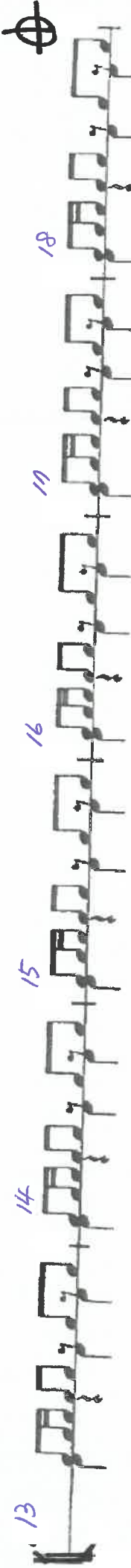
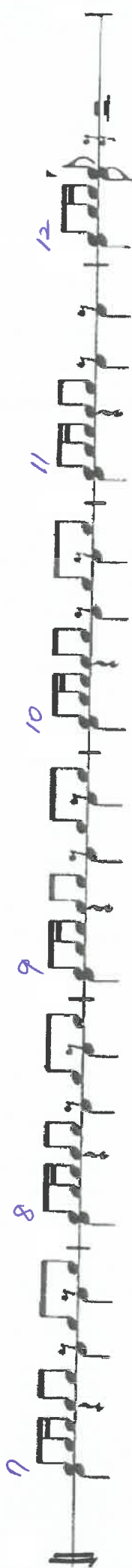
 25 26 27 28 29 30

D.S.

A

진주조개잡이 <큰북, 작은북>

5



신수소개샵이 < 피아노 >

Handwritten musical score for the first system, measures 1-6. The score is written on two staves (treble and bass clef) with a key signature of one sharp (F#). The melody is in the treble clef, and the accompaniment is in the bass clef. Measure numbers 1, 2, 3, 4, 5, and 6 are written in blue ink above the staves.

Handwritten musical score for the second system, measures 7-12. The score continues from the first system. Measure numbers 7, 8, 9, 10, 11, and 12 are written in blue ink above the staves.

Handwritten musical score for the third system, measures 13-18. The score continues from the second system. Measure numbers 13, 14, 15, 16, 17, and 18 are written in blue ink above the staves.

Handwritten musical score for the fourth system, measures 19-24. The score continues from the third system. Measure numbers 19, 20, 21, 22, 23, and 24 are written in blue ink above the staves.

Handwritten musical score for the fifth system, measures 25-30. The score continues from the fourth system. Measure numbers 25, 26, 27, 28, 29, and 30 are written in blue ink above the staves. The system ends with the instruction "D. S." (Da Capo) in black ink.

1> 1< 1> 1<

Handwritten musical score for a song, featuring ten staves of music. The lyrics are written in Korean and are transcribed below the staves. The score includes various musical notations such as notes, rests, and bar lines. The lyrics are as follows:

1. 도 사 가 슬
2. 슬 미 파 파 슬
3. 파 레 레
4. 파 레 레
5. 파 레 레
6. 파 레 레
7. 파 레 레
8. 파 레 레
9. 파 레 레
10. 파 레 레

The score concludes with the word "Fine" written above the final staff.

2^
행진단
v
베를린
2^

20

10

1

1

1	2	3	4	5	6	7	8	9	10	11	12	13	14	15	16	17	18	19	20	21	22	23	24	25	26	27	28	29	30	31	32	33	34	35	36	37	38	39	40	41	42	43	44	45	46	47	48	49	50	51	52	53	54	55	56	57	58	59	60	61	62	63	64	65	66	67	68	69	70	71	72	73	74	75	76	77	78	79	80	81	82	83	84	85	86	87	88	89	90	91	92	93	94	95	96	97	98	99	100
---	---	---	---	---	---	---	---	---	----	----	----	----	----	----	----	----	----	----	----	----	----	----	----	----	----	----	----	----	----	----	----	----	----	----	----	----	----	----	----	----	----	----	----	----	----	----	----	----	----	----	----	----	----	----	----	----	----	----	----	----	----	----	----	----	----	----	----	----	----	----	----	----	----	----	----	----	----	----	----	----	----	----	----	----	----	----	----	----	----	----	----	----	----	----	----	----	----	----	-----

1	2	3	4	5	6	7	8	9	10	11	12	13	14	15	16	17	18	19	20	21	22	23	24	25	26	27	28	29	30	31	32	33	34	35	36	37	38	39	40	41	42	43	44	45	46	47	48	49	50	51	52	53	54	55	56	57	58	59	60	61	62	63	64	65	66	67	68	69	70	71	72	73	74	75	76	77	78	79	80	81	82	83	84	85	86	87	88	89	90	91	92	93	94	95	96	97	98	99	100
---	---	---	---	---	---	---	---	---	----	----	----	----	----	----	----	----	----	----	----	----	----	----	----	----	----	----	----	----	----	----	----	----	----	----	----	----	----	----	----	----	----	----	----	----	----	----	----	----	----	----	----	----	----	----	----	----	----	----	----	----	----	----	----	----	----	----	----	----	----	----	----	----	----	----	----	----	----	----	----	----	----	----	----	----	----	----	----	----	----	----	----	----	----	----	----	----	----	----	-----