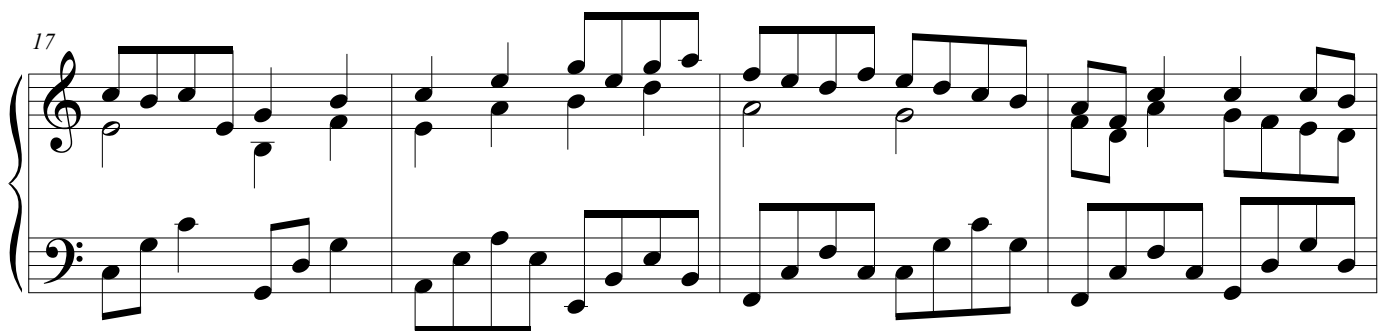
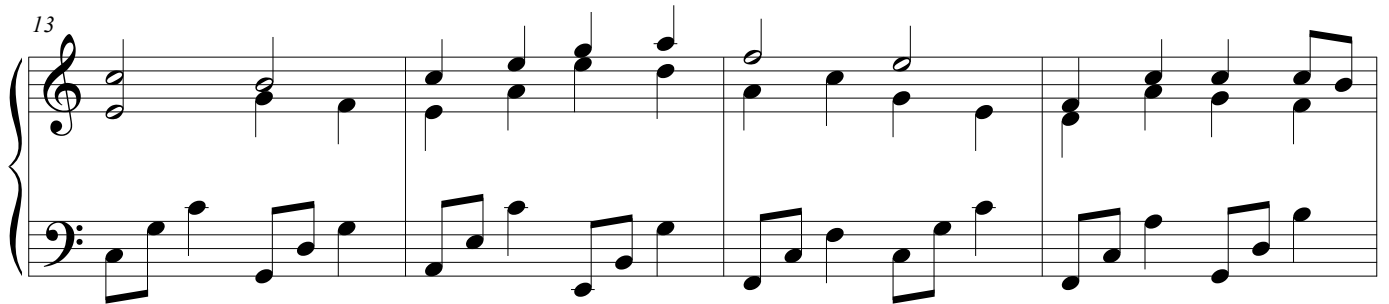
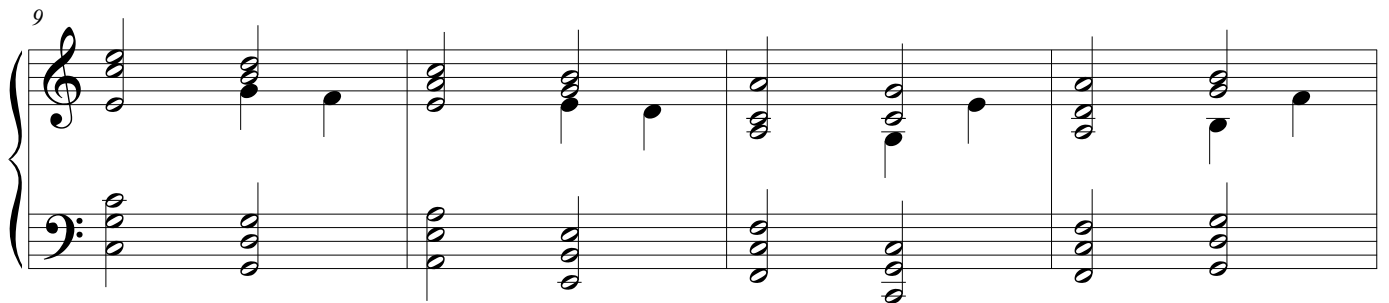
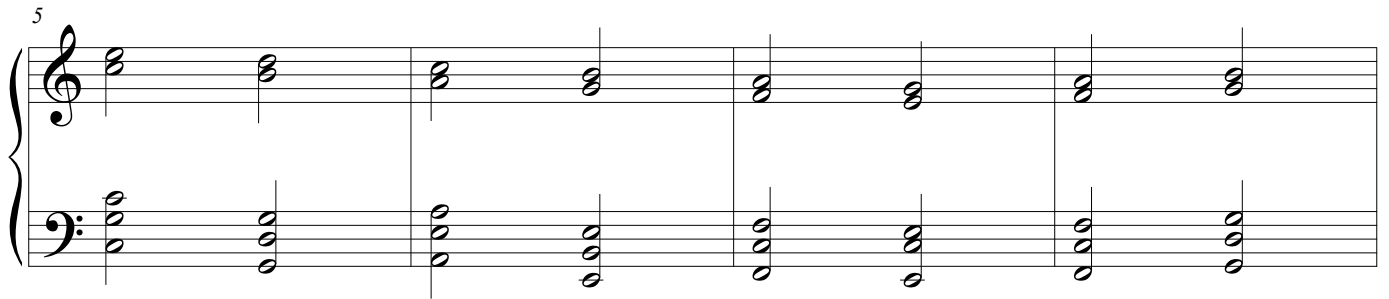
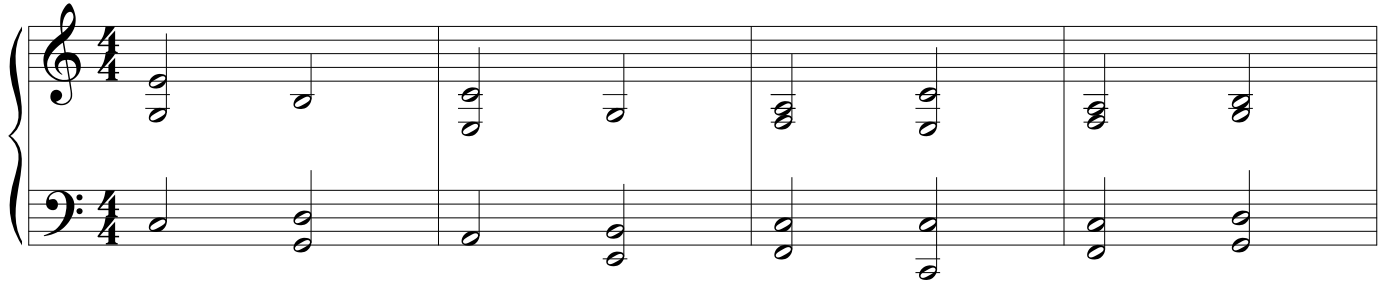


Piano

Hamonica Kanon

김푸른 편곡

♩=72



21

Measures 21-24: Treble and bass staves. Treble staff features eighth-note runs and chords. Bass staff features a steady eighth-note accompaniment.

25

Measures 25-28: Treble staff continues with eighth-note patterns. Bass staff changes to a pattern of half notes and quarter notes.

29

Measures 29-32: Treble staff continues with eighth-note patterns. Bass staff changes to a pattern of half notes and quarter notes.

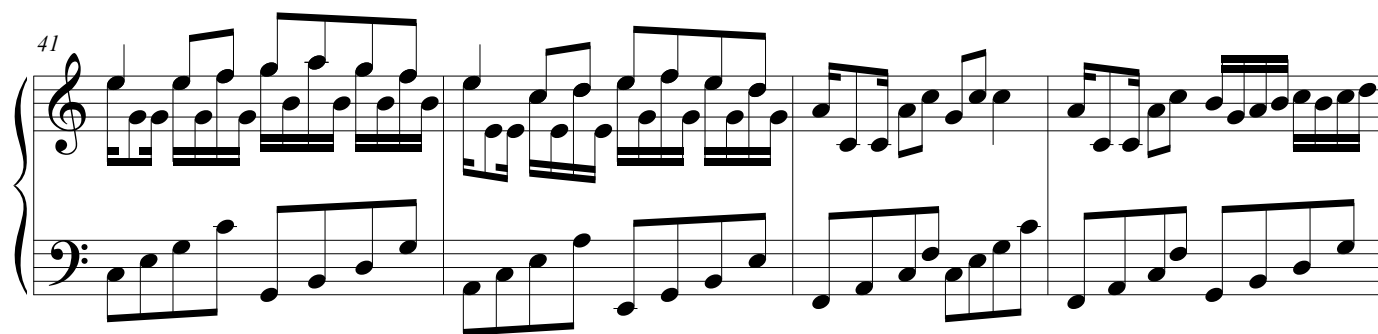
33

Measures 33-36: Treble staff continues with eighth-note patterns. Bass staff changes to a pattern of half notes and quarter notes.

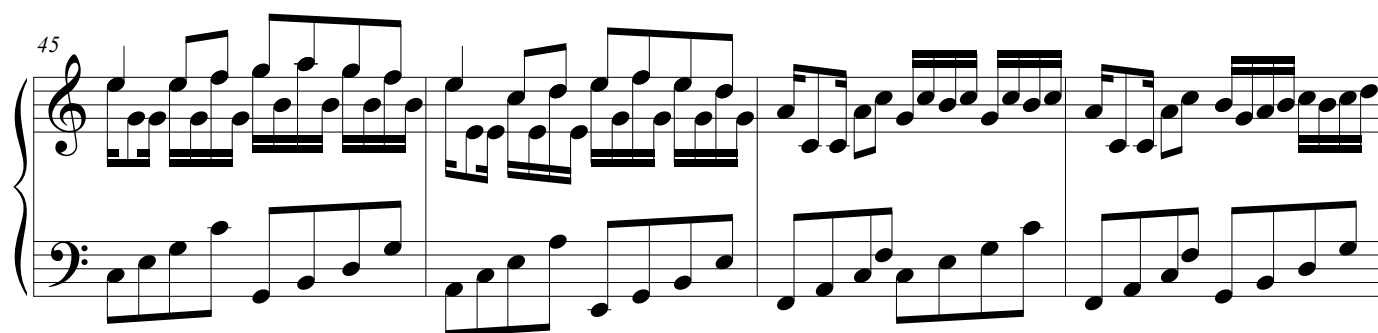
37

Measures 37-40: Treble staff continues with eighth-note patterns. Bass staff changes to a pattern of half notes and quarter notes.

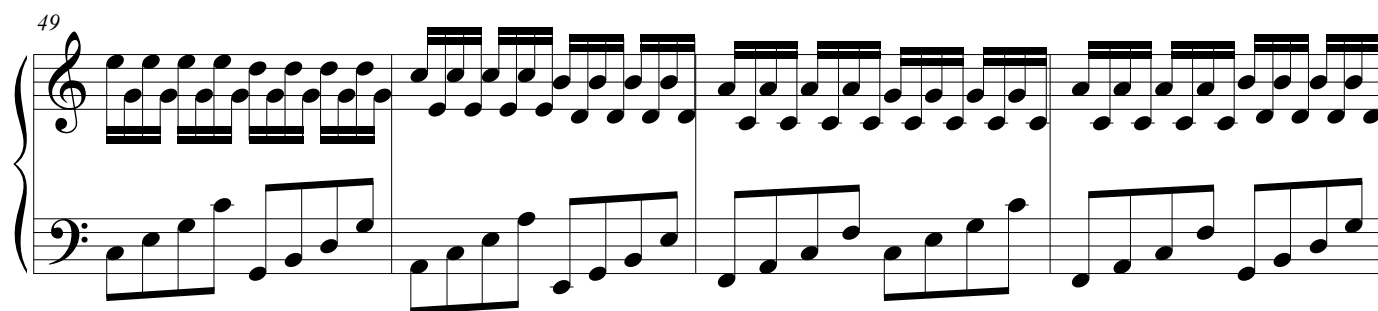
41



45



49



53

