

# 시네마 천국

3학년 오카리나

Score

♩ = 59

Soprano

Mezzo-Soprano

Alto

Piano

This system contains the first four staves of the score. The Soprano staff begins with a whole rest, followed by a half note G4, a dotted half note A4, and another whole rest. The Mezzo-Soprano staff starts with two whole rests, then a half note G4, and continues with a melodic line of eighth and quarter notes. The Alto staff has a whole rest, followed by a half note G4, and then another whole rest. The Piano part consists of two staves: the right hand plays a half note G4 and a dotted half note A4, while the left hand plays a sustained octave G3 with a tremolo effect.

S

Mezzo

A

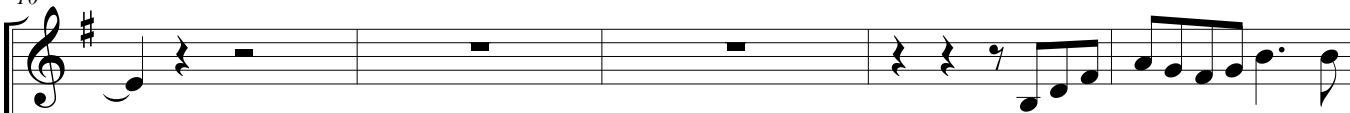
Pno.

This system contains the next four staves, starting at measure 5. The Soprano staff has a whole rest, then a half note G4, a dotted half note A4, and continues with a melodic line of eighth and quarter notes. The Mezzo-Soprano staff begins with a quarter rest, followed by a melodic line of eighth and quarter notes. The Alto staff has a whole rest, then a half note G4, a dotted half note A4, and continues with a melodic line of eighth and quarter notes. The Piano part consists of two staves: the right hand continues the melodic line from the previous system, and the left hand plays a sustained octave G3 with a tremolo effect.

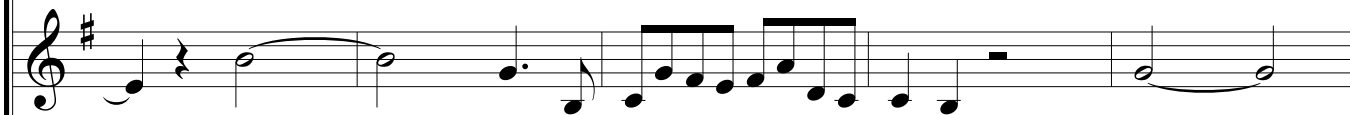
시네마 천국

2  
10

S



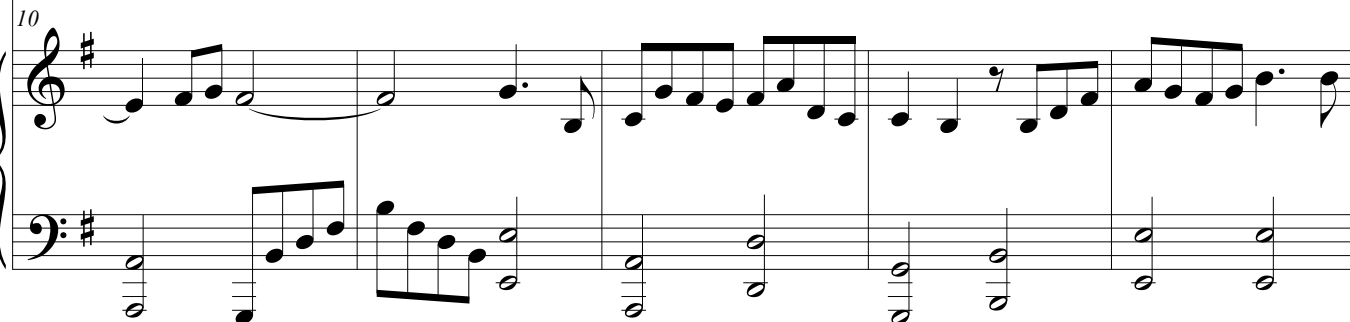
Mezzo



A



Pno.



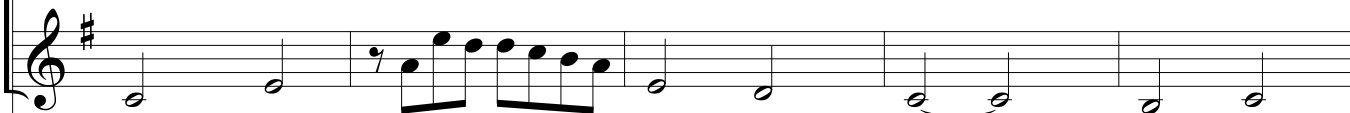
S



Mezzo



A



Pno.



20

S

1.

2.

Mezzo

1.

2.

A

1.

2.

Pno.

20

1.

2.