

자연수의 혼합 계산 섞여 있음 - 계산 방법

1. $+, -, () \Rightarrow (), \xrightarrow{\text{앞} \rightarrow \text{뒤}}$

2. $\times, \div, () \Rightarrow (), \rightarrow$

3. $+, -, \times, () \Rightarrow (), \times, \rightarrow$

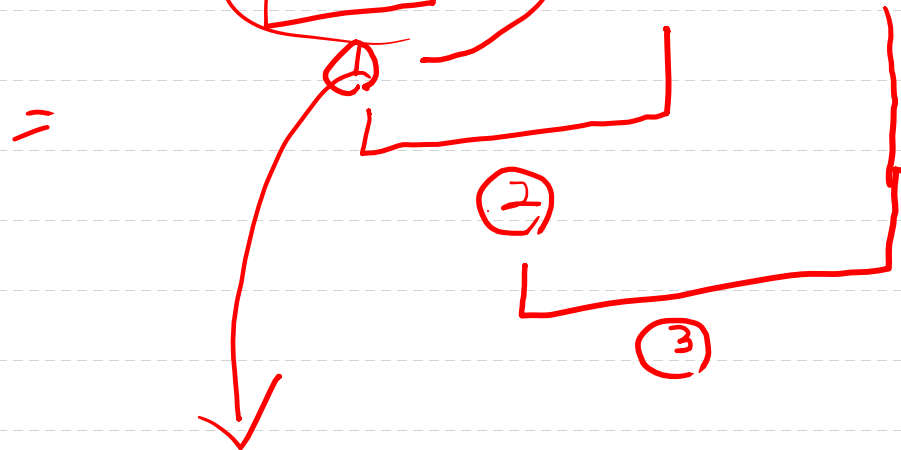
★ 4. $+, -, \div, () \Rightarrow (), \div, \rightarrow$

5. $+, -, \times, \div, ()$

$$(17 + 13) \div 5 - 3$$

(), (÷), \rightarrow

$$\begin{array}{r} 17 \\ + 13 \\ \hline 30 \end{array}$$



계산 순서

$$\begin{array}{r} 6 \\ 5 \overline{) 30} \\ \underline{30} \\ 0 \end{array}$$

$$= 30 \div 5 - 3$$

$$= 6 - 3$$

$$= 3$$